

169 KING STREET EAST





Fully fixtured restaurant in the King East Design District, steps from the historic St. Lawrence Market

AVAILABLE SPACE

Ground Floor	2,013 SF
Lower Level	700 SF

SEMI GROSS RENT

\$11,460/month

FRONTAGE

27 FT along the south side of King Street East

POSSESSION

Immediate

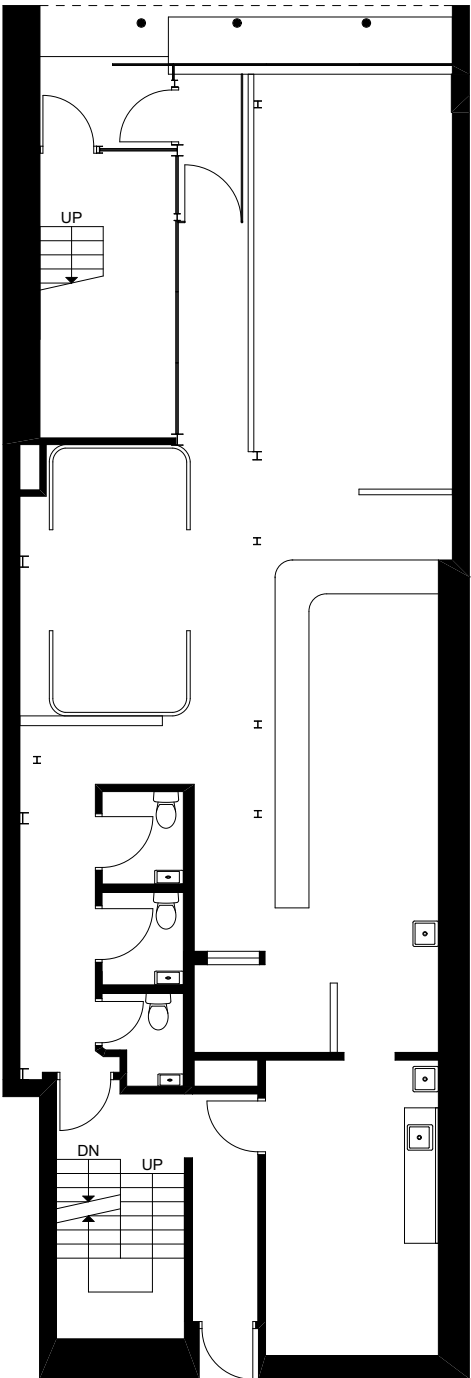
TERM

10 years

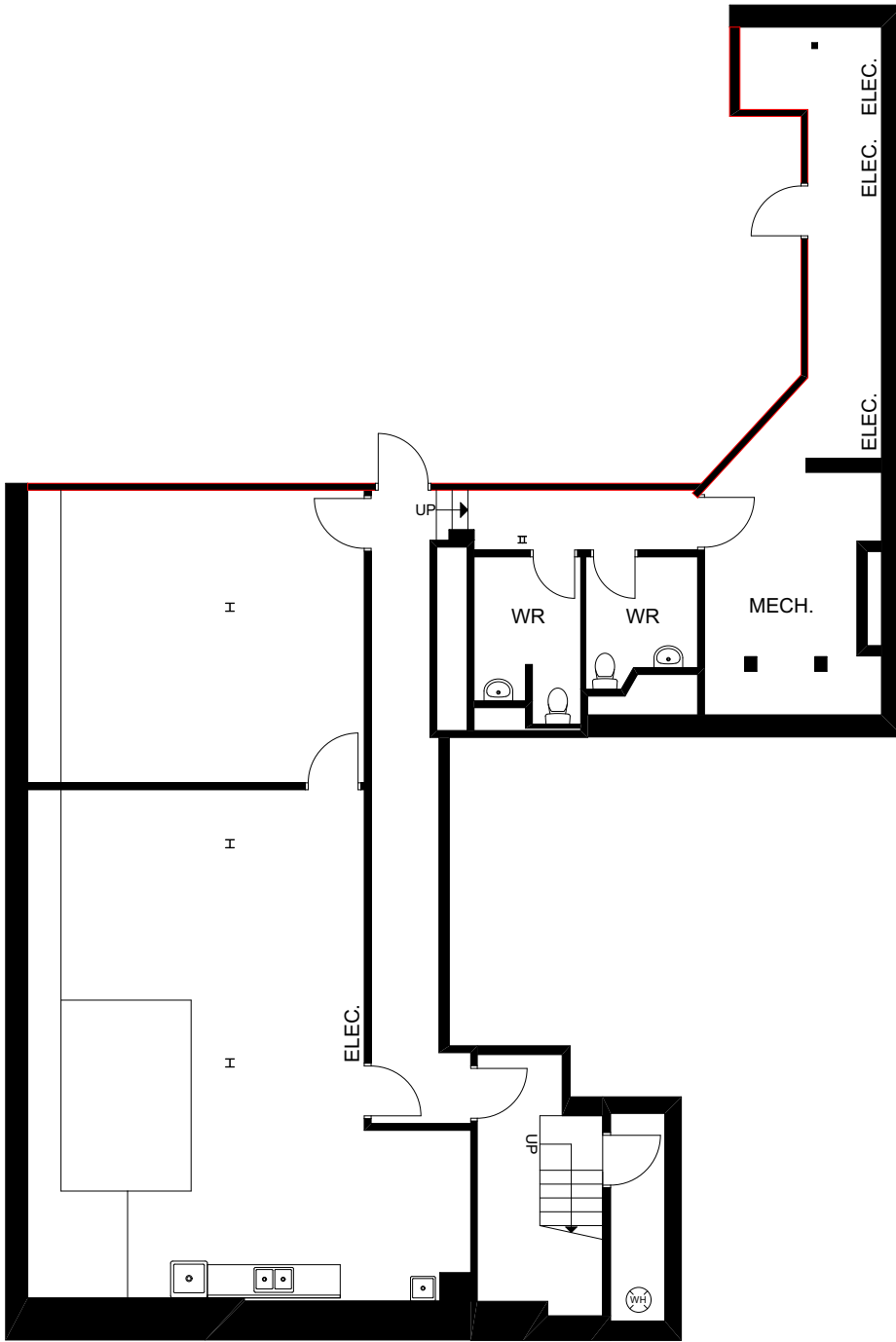
HIGHLIGHTS

This licensed restaurant includes a lower level set up as a commissary kitchen with limited exhaust venting and a large walk-in cooler, prep area and a separate office/liquor room/storage area as well as staff washrooms and lockers. This historic area of King East is surrounded by design focused Retail, Offices, Residential and George Brown College and continues to grow with plenty of foot traffic.

FLOOR PLANS

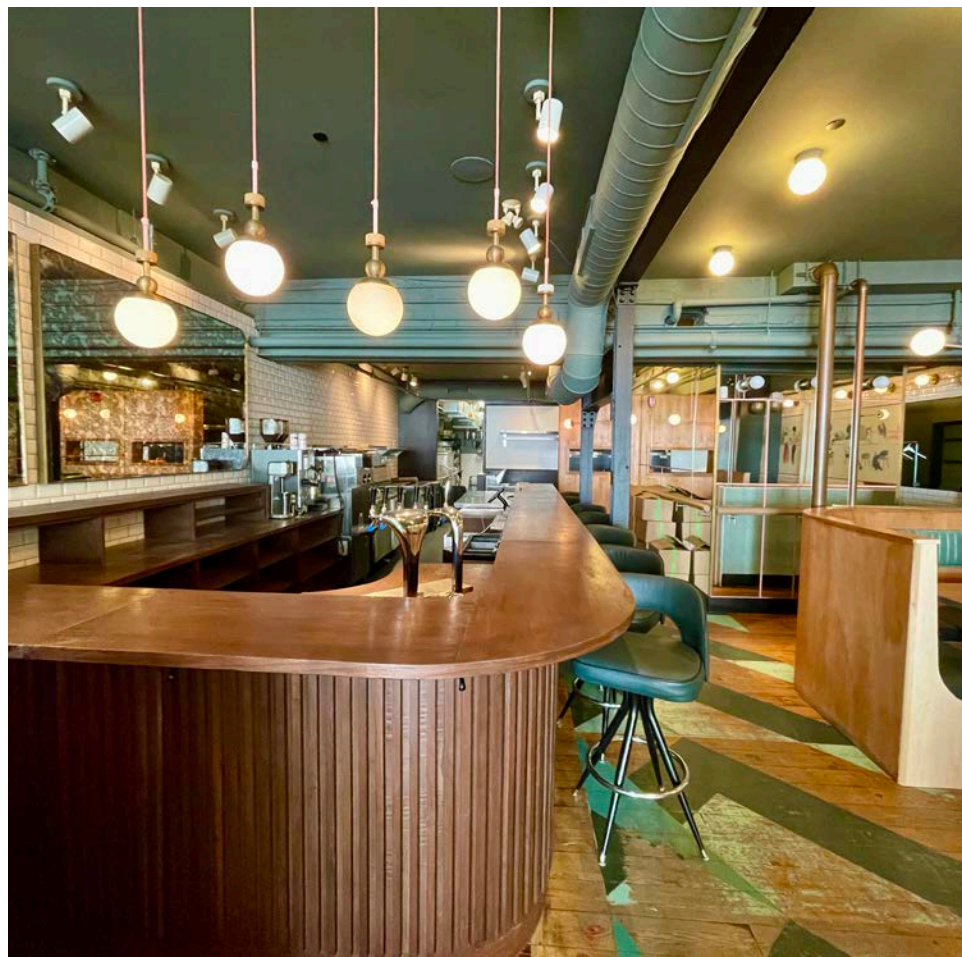
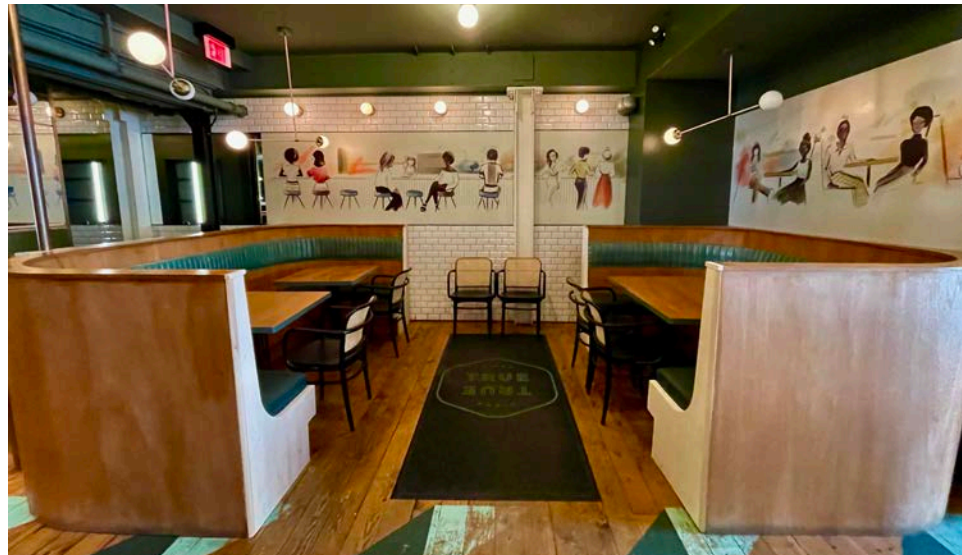


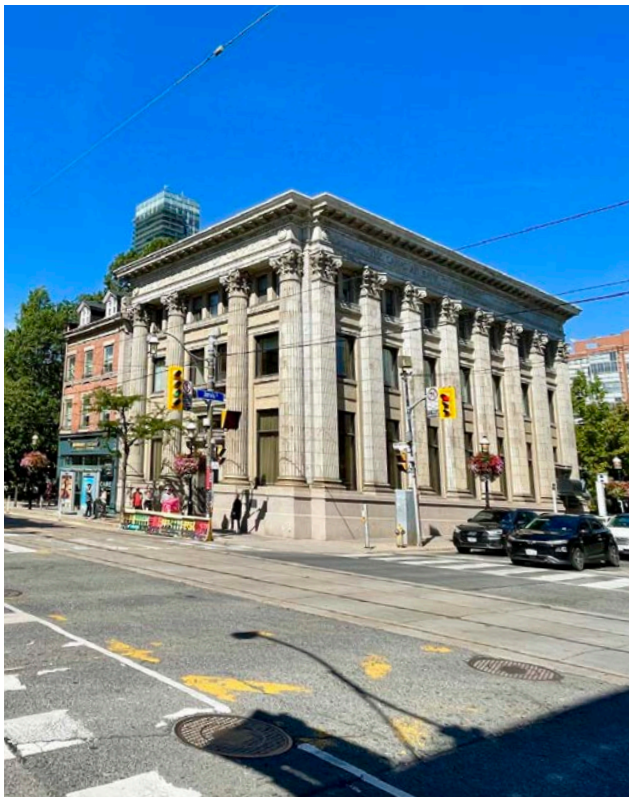
GROUND FLOOR



LOWER LEVEL

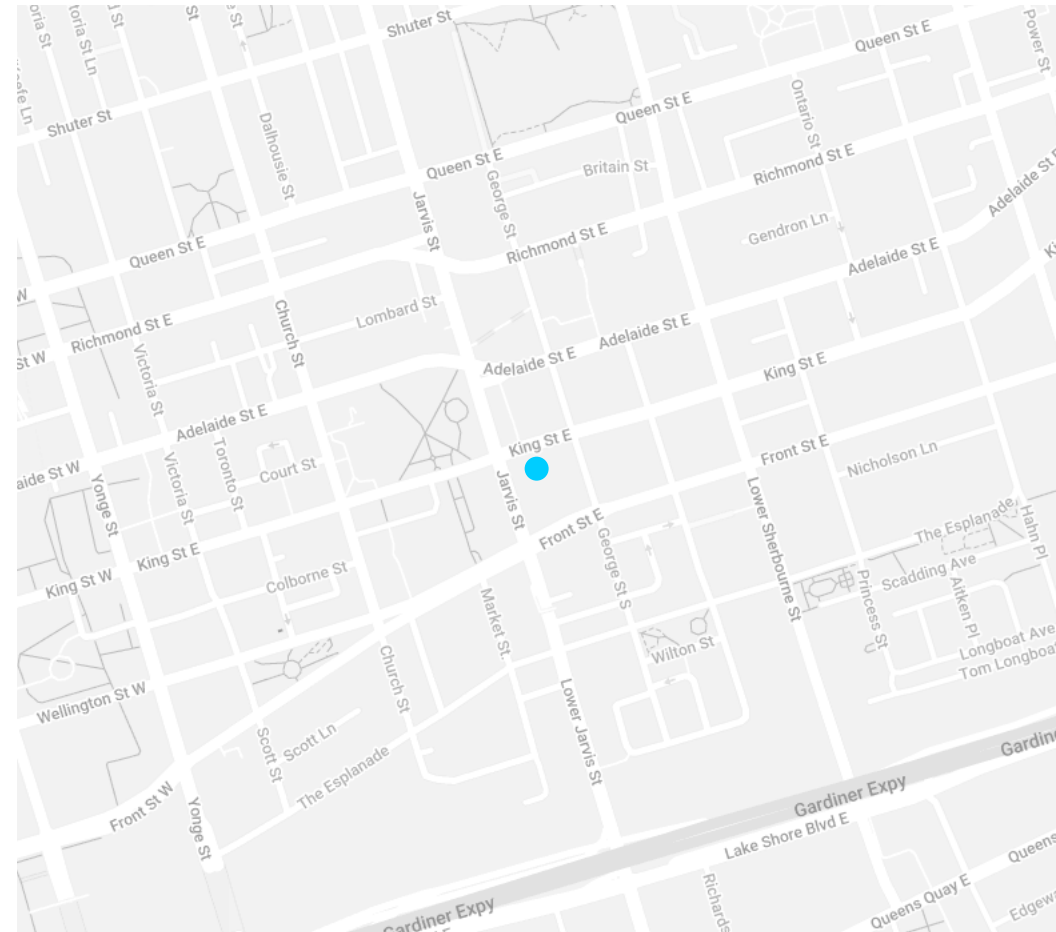
INTERIOR





NEIGHBOURHOOD

CONTACT



169
KING
STREET
EAST

STEVEN ALIKAKOS
President & Broker of Record

416.763.0303
steven@koolspace.com
koolspace.com

