

2020

KING  
EAST  
DESIGN  
DISTRICT

# 145 KING STREET EAST





# DETAILS

## Available Space

Ground Floor 4,611SF  
Mezzanine 377 SF

## Frontage

48 FT on King St E  
95 FT along Market Lane Park

## Net Rent

\$55/SF

## Additional Rent

\$31/SF (2019)

## Possession

Immediate

## Term

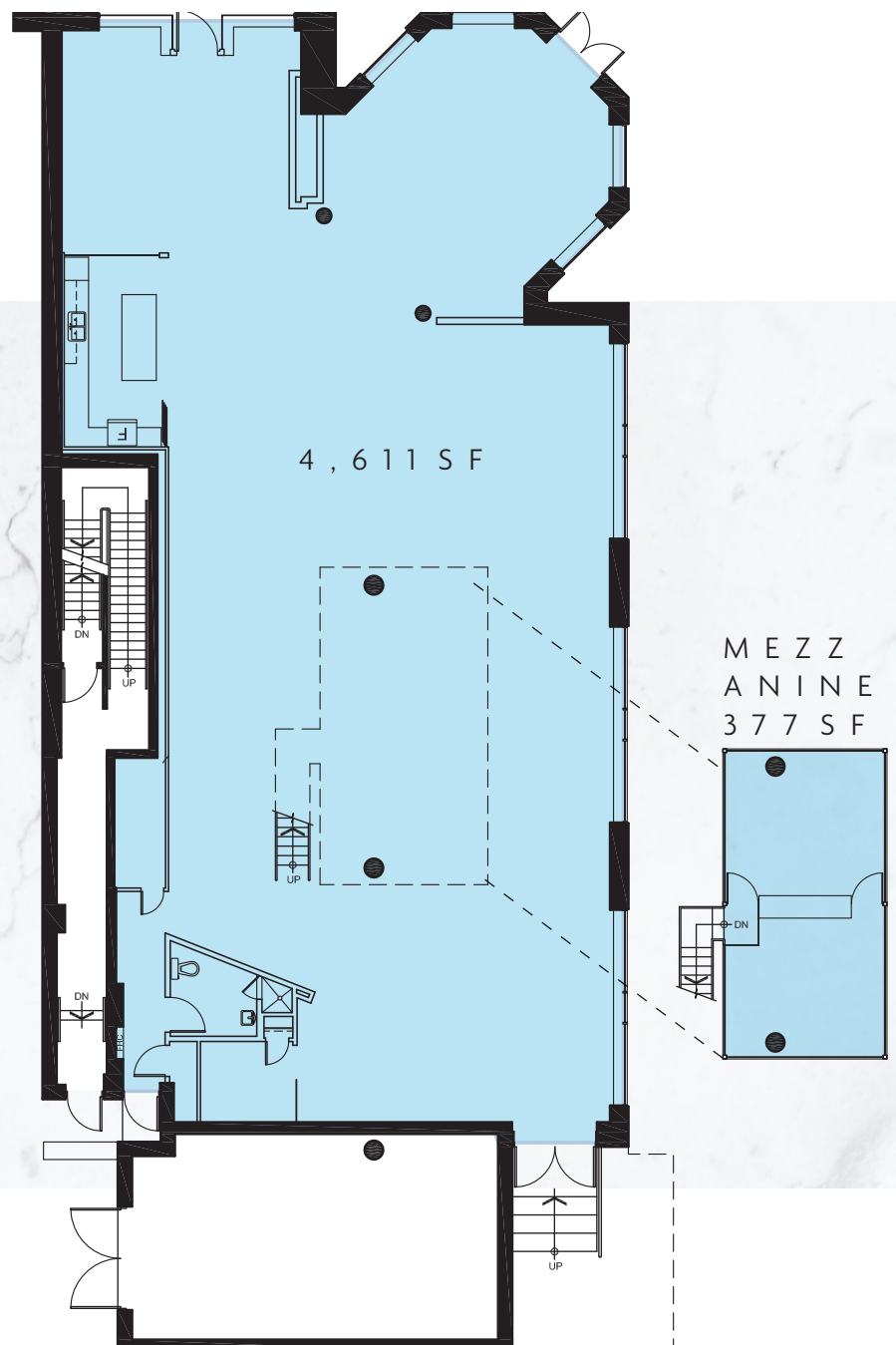
10 years

## Highlights

- corner space with expansive frontage
- highly desirable neighbourhood
- incredible natural light
- walk score of 100
- steps from st. lawrence market
- two blocks from yonge-king subway



# FLOOR PLAN

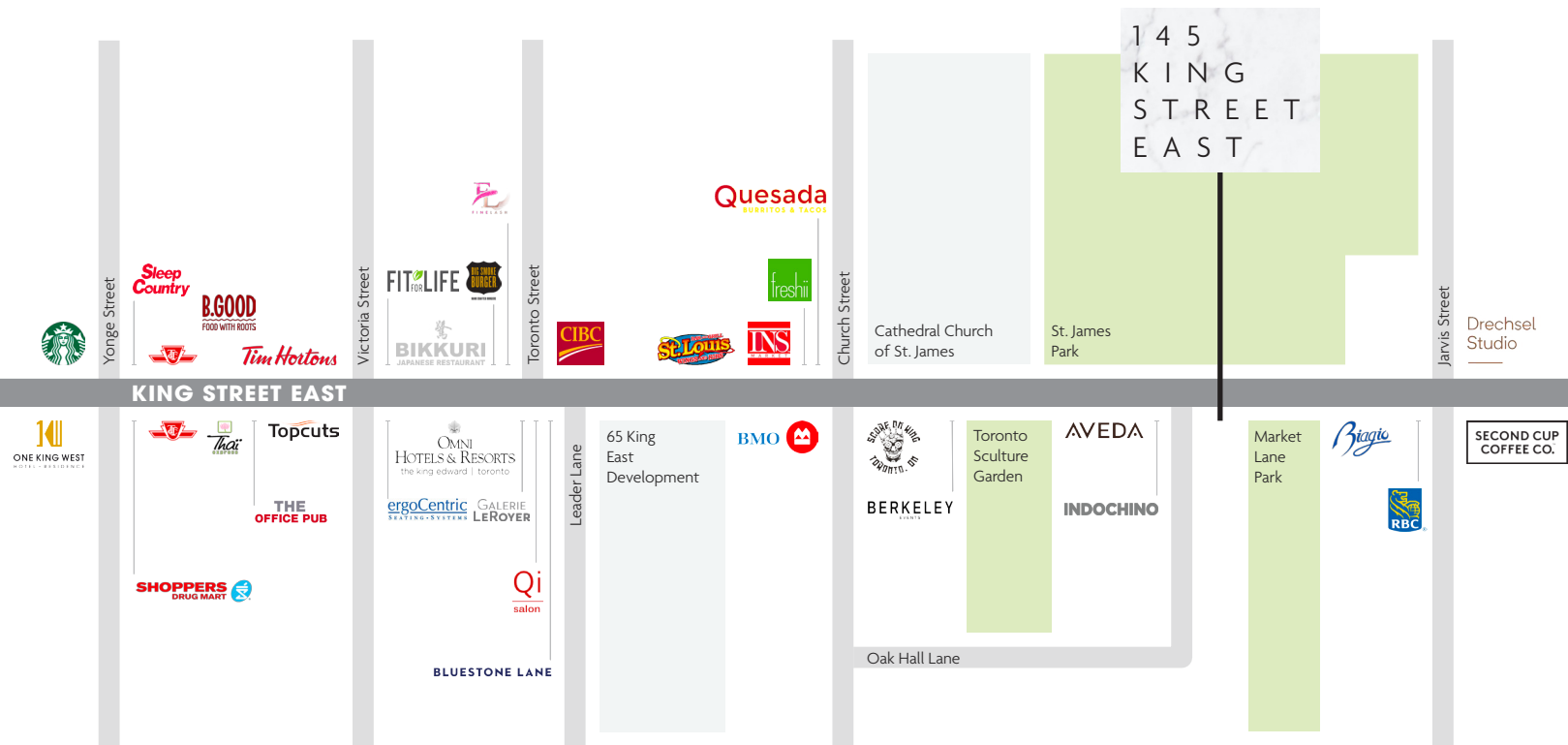




# PHOTOS



# RETAIL MAP



# CONTACT

Steven Alikakos  
416.763.0303  
President & Broker of Record  
steven@koolspace.com  
www.koolspace.com

© 2020 Koolspace, a Retail Estate Brokerage All information is from sources believed reliable, not independently verified, and thus subject to errors, omissions, and modifications such as price, listing, square footage, rates and commissions. All information, estimates and projections subject to change, market assumptions, unknown facts and conditions, and future potentialities. Koolspace makes no express or implied representations or warranties, as facts and results may vary materially from all information, estimates and projections. All renderings presented are conceptual.

